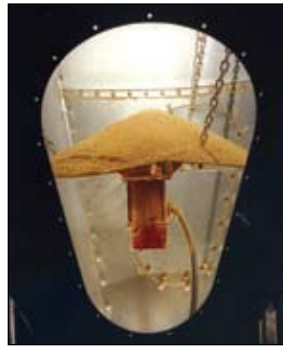


Chore-Time's SHAKER-PLATE® Material Flow Control for ALL-OUT® Bin Performance

Chore-Time's SHAKER-PLATE® Material Flow Control offers you a benefit no other bin manufacturer can match: first-in, first-out feed bin performance. The SHAKER-PLATE Control's simple, yet innovative approach helps you get mass flow of feed in the bin. Chore-Time's SHAKER-PLATE — it's another part of Chore-Time's next generation of feed bins and their unique ALL-OUT® Feed Management System.



Patent Pending

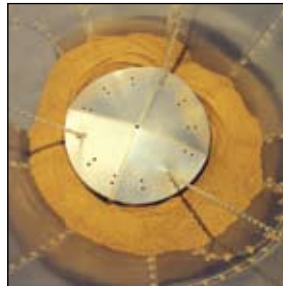
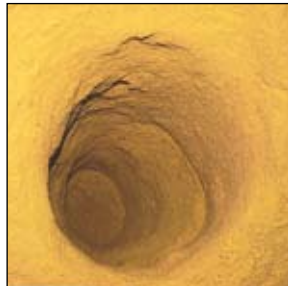


Chore-Time's innovative SHAKER-PLATE® Material Flow Control suspends inside the feed bin's hopper. Operated by an economical, fractional horsepower motor, the SHAKER-PLATE Unit vibrates to create mass flow for the stored feed. It automatically operates whenever the unloading auger is functioning.



The SHAKER-PLATE Flow Control helps your bin feed out consistently and trouble-free. It easily installs on all new or existing Chore-Time 6-foot through 15-foot (1.8- through 4.6-meter) diameter bins.

Without Chore-Time's SHAKER-PLATE Material Flow Control, even free-flowing feeds tend to form undesirable "rat-holes" as feed first flows out the center of the bin followed by feed from the sidewalls.



Chore-Time's SHAKER-PLATE Unit causes feed to slide down the sidewall and hopper in a mass flow, constantly cleaning and polishing the inside of the feed bin. This mass flow action eliminates opportunities for feed to hang up and turn stale or moldy.



Find your certified TRUE RED® distributor in our on-line distributor finder to get more information.

Leadership Through Innovation® for a New Feed Storage Standard



Chore-Time Poultry Production Systems • Chore-Time Brock International • Divisions of CTB, Inc.

Phone: 574.658.4101 or +1.574.658.9323 (International)

Internet: www.choretimepoultry.com or www.ctbworld.com E-mail: poultry@choretime.com