

CHORE-TIME® Tunnel Doors



Let's grow together.

Chore-Time's Tunnel Doors Tumble Air for Better Mixing Throughout the House



Up to five-foot door heights available to match typical tunnel house openings for retrofit or new construction. Door angle is adjustable for maximum efficiency in a wide range of climate conditions.

Pre-assembled door available for steel truss buildings or knee-brace applications.

Image from Video Footage of Smoke Test



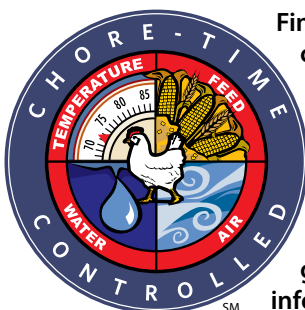
Air shoots upward and then swirls down and around from center of house for outstanding air mixing.

Better In-House Air Mixing

- Cyclonic air movement generates desirable airflow at bird level throughout the house.
- No more dead zones at side- and end-walls such as are typical of curtain sidewall or double door houses.
- Insulates about eight times better than a curtain during winter (when completely closed) for reduced energy costs.
- During tunnel-assist mode, cold air is directed away from the birds until it has mixed with house air.

Innovative Design

- Laminated, composite door panel of 1.5-inch (38-mm) thick extruded foam insulation, sandwiched between thick pebbled fiber-glass-reinforced plastic.
- Structure provides greater rigidity and dent resistance.
- Wall-mounted, continuous "P"-shape seal does not affect airflow when door is open, and is more forgiving of house imperfections for a tighter seal when door is closed.
- Assembly (composite door, stainless steel hinges and nylon/galvanized hardware) is pest- and corrosion-resistant.
- Modular panel design allows maximum flexibility in door size to match house sidewall openings.

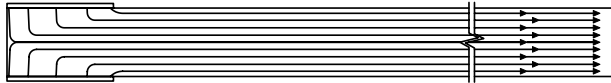


Find your certified TRUE RED® distributor in our on-line distributor finder to get more information.

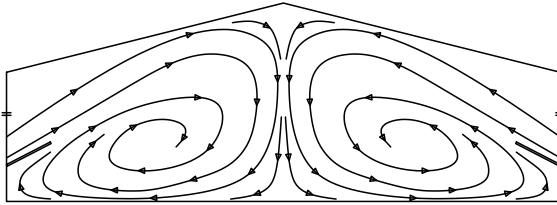
Tunnel Door Specifications

	Four-Foot Tunnel Door (Rough Opening 47 Inches High)			Five-Foot Tunnel Door (Rough Opening 59 Inches High)		
	Door Alone	Door with 5 Ft. Pad	Door with 6 Ft. Pad	Door Alone	Door with 5 Ft. Pad	Door with 6 Ft. Pad
CFM per Linear Foot	1,960	1,875	1,960	2,460	1,875	2,250
Maximum Limited By	Door	Pad*	Door	Door	Pad*	Pad*

*CFM per Linear Foot for a Five-Foot Pad Alone Is 1,875; for a Six-Foot Pad Alone Is 2,250.

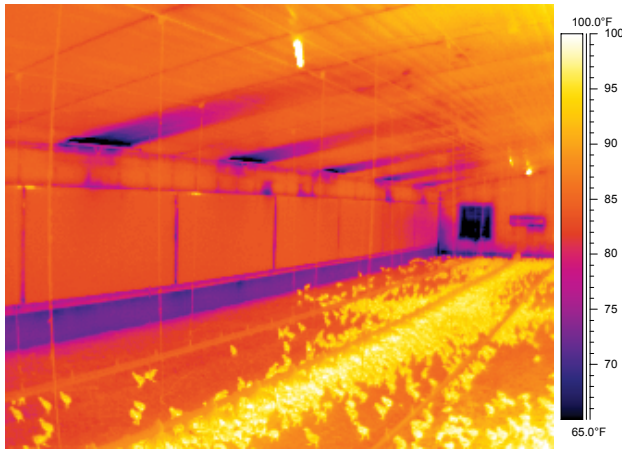


Tunnel Door Air Flow Diagram (top view)

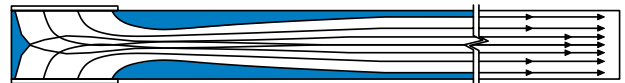


Tunnel Door Air Flow Diagram (side view)

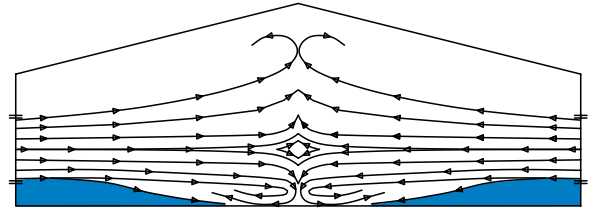
Chore-Time® Tunnel Door Heat Image from the University of Georgia



Chore-Time's tunnel door seals so well when closed, that there are few cold "blue" zones (photo at left).

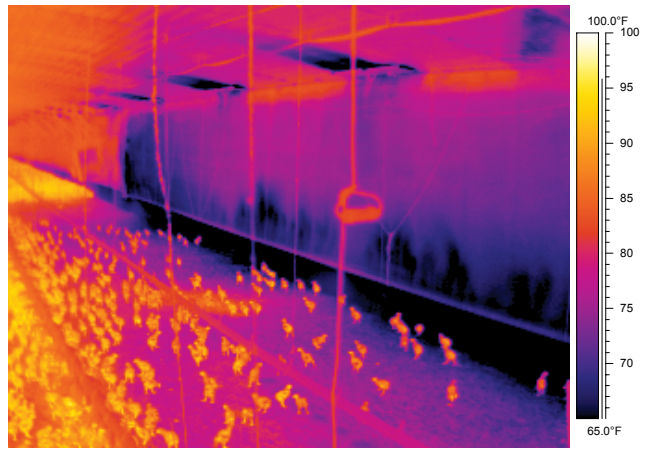


Curtain Sidewall Air Flow Diagram (top view)
Blue shading indicates dead air space.



Curtain Sidewall Air Flow Diagram (side view)
Blue shading indicates dead air space.

Curtain Sidewall Heat Image from the University of Georgia



A typical curtain sidewall house has vast areas of uncomfortably cold "blue" zones along wall and floor.

Find your certified TRUE RED® distributor in our on-line distributor finder.

www.choretimepoultry.com

Chore-Time Poultry Production Systems
Chore-Time Brock International
Divisions of CTB, Inc.

Phone: 574.658.4101 or +1.574.658.9323 (International)
E-mail: poultry@choretime.com or world@ctbworld.com



Let's grow together.

Feeding | Watering | Controls | Ventilation | Heating | Nests | Feed Storage