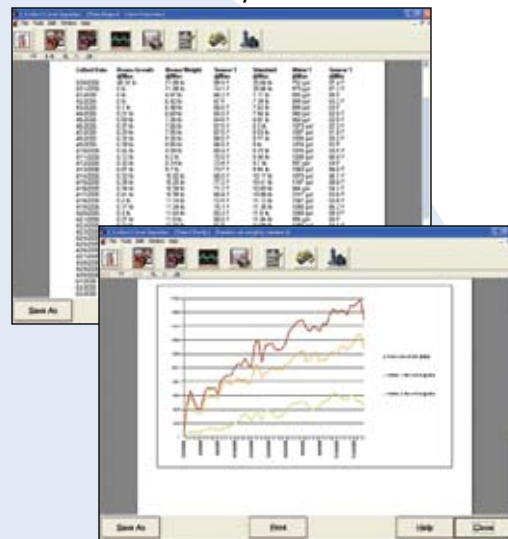


C-COLLECT® Analysis Tools Provide a Simple Solution for Complex Data

C-COLLECT® Software

- Works with CHORE-TRONICS® Controls to provide easy access to house conditions and trends – daily, or as frequently as you wish.
- Use C-COLLECT® software to tell the controls what data to gather, to gather the data (or load it from your C-COLLECT Data Courier), to analyze the data, and to generate user-defined reports, automatically or on demand.
- Print reports, view them on screen, or use electronic options to create an e-mailable PDF or a web-compatible page for posting where you wish.
- Data is encrypted during transfer and is stored in a SQL database. Amount of data to be stored is limited only by the size of your hard drive or external storage.
- Manage live production better than ever before. No more waiting for a weekly performance report before taking action.
 - Optimum scheduling of bird harvests and feed deliveries based on performance data.
 - Establish and refine proven standards, evaluate growth variables, identify and quickly correct negative trends, and meet mandated requirements, resulting in better bird performance.

C-COLLECT® Sample Screens



C-COLLECT® Software is a powerful database tool for data storage and analysis to help give you the best possible return on your investment.

C-CENTRAL™ Professional Software is also available for remote setting and monitoring of your CHORE-TRONICS® Controls.



Handheld unit measures 4 x 7 x 1.3 inches and fits in a shirt pocket.

C-COLLECT® Data Courier

- Data courier is designed for on-site data collection for use with C-COLLECT® Analysis and Database Software. No extra wiring is necessary.
- Uses your own replaceable SD card to store data, so you can collect data from as many houses as you want.
- Easy-to-use unit features numerical and LED (light-emitting diode) display for immediate feedback of collection status.
- Flexible data collection options allow you to collect data from a single control or from networked controls to gather an entire farm's data.
- Reduces service technicians' time spent tediously recording data at each house. In most cases, data can be downloaded in two minutes or less.
- Durable unit features a rugged case and is designed for field use in poultry house environments.

C-COLLECT® Analysis Tools

Bird Scale

- Improves timeliness and accuracy of data for more precise bird harvest scheduling.
- Simplifies growth and uniformity tracking based on user-defined standards.
- Birds move across the scale on their own, reducing labor requirements for weighing and sampling.
- Automatic system reduces biosecurity risk of manual weighing.
- Scale features durable, corrosion-resistant steel construction.
- Dependable hardware technology and software algorithms.



Use broiler scale for broilers up to 8 pounds (3.6 kg) or turkey scale for hens or young toms up to 30 pounds (13.6 kg). Dependable ceiling mount contributes to greater accuracy and also simplifies platform height adjustment.

CHORE-TRONICS® 2
Controls direct house equipment and monitor house conditions.



The CHORE-TIME® Feed Scale mounts neatly against the house sidewall.



Air Speed Meter

Chore-Time's Air Speed Meter helps verify tunnel fan performance by dependably measuring air flow over 125 feet per minute (0.635 m/s). Unit is easy to install and low maintenance.

Feed Scale

- Real-time data regarding feed inventory aids in scheduling feed delivery.
- Accurate consumption rates help in evaluating growth performance and in identifying potential problems.
- Unique pivoting, split hopper dumps feed from one side while the other side is filling, for continuous flow of feed.
- Dependable unit eliminates common variables such as temperature variations and power surges for greater accuracy.
- Scale features durable, corrosion-resistant steel construction and is factory-calibrated for high accuracy.
- Unit registers exactly what is being fed, rather than relying on problematic volumetric projections or imprecise auger timing.



Poultry Production Systems
Chore-Time Brock International

Divisions of CTB, Inc.

Phone: 574.658.4101 or +1.574.658.9323 (International)

Internet: www.choretimepoultry.com or www.ctbworld.com

E-mail: poultry@choretime.com